

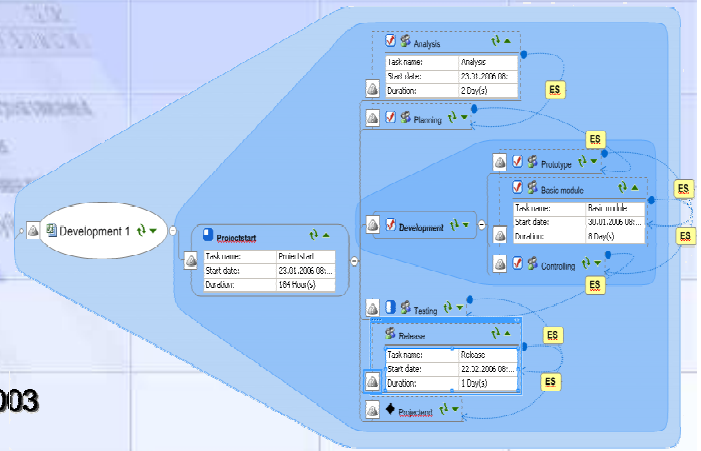


# ProjectLINKER 2005

## The visual entrance in your project management

### Project management starts in head

- ▶ For visual representing ideas and informations, structures and dependences and to put it into project management in the next moment. Connect the world of business-mapping with the world of project management in a very simple way.
- ▶ With ProjectLINKER 2005 you plan your projects both with Mindjet® MindManager® Pro 6 and with the Microsoft Office Project 2003 product series.

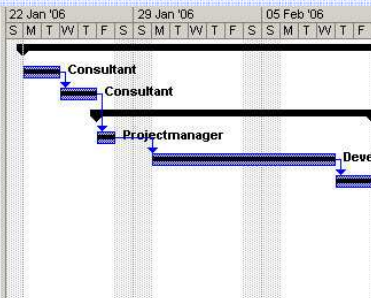


### Simple entrance into project planning

- ▶ With extensively functions from ProjectLINKER 2005 and intuitively visual user surface from Mindjet® MindManager® Pro 6 you develop and plan your project tasks, project phases, task dependences and resources without project know how.
- ▶ Store these informations with help of ProjectLINKER 2005 as a project into Microsoft Office Project Server 2003. The project is put on automatically during the storage and can work on immediately after this.
- ▶ You don't use Microsoft Office Project 2003 Server at the moment? You can store this project naturally as file with Microsoft Office Project Standard 2003 or Microsoft Office Project Professional 2003.

If your enterprise employs Microsoft Office Project Server 2003 at a later time you can import project files into Microsoft Office Project Server 2003 at any time.

Task Name	Duration	Start	Finish
Projectstart	23 d	Mon 23.01.06	Wed 22.02.06
Analysis	2 d	Mon 23.01.06	Tue 24.01.06
Planning	2 d	Wed 25.01.06	Thu 26.01.06
Development	11 d	Fri 27.01.06	Fri 10.02.06
Prototype	1 d	Fri 27.01.06	Fri 27.01.06
Basic module	8 d	Mon 30.01.06	Wed 08.02.06
Controlling	2 d	Thu 09.02.06	Fri 10.02.06
Testing	7 d	Mon 13.02.06	Tue 21.02.06
Release	1 d	Wed 22.02.06	Wed 22.02.06
Projectend	0 d	Wed 22.02.06	Wed 22.02.06



### To detail and actual project plans

- ▶ Further detail planning like projectstructure planning, milestone planning, resource planning in detail and progress monitoring is accomplished in Microsoft Office Project 2003. Afterward you can actual the project in the Mindjet® MindManager® Map and you are on the actual condition of the project.

## Advantages and increases in value

### Increases in value for enterprises

- Avoids double work for project manager
- Accelerates intuitively planning process
- Facilitates and improved project reporting
- Increases the accuracy of resource planning
- Supports the introduction of multi projecting
- Creates transparency for project participants
- Reduction of meeting times

### Increases in value for employees

- Intuitively operation
- Microsoft Office Look and Feel
- No training necessary
- Immediately usable
- Higher acceptance to plan small projects
- No project know how necessary
- Higher clarity in projects

## Support

- Connects Microsoft Office Project Server 2003 and Mindjet® MindManager® Pro 6
- Supports Microsoft Office Project Standard 2003
- Supports Microsoft Office Project Professional 2003
- Supports Microsoft Office Project Server 2003
- Multi-Language Support (at present German and English)

Functions	Mindjet® MindManager® Pro 6	Microsoft Office Project 2003		
		Standard	Professional	Professional + Server
<b>ProjectLINKER 2005</b>				
Create new project local	✓	✓	✓	✓
Create new project in Project Server	✓	▪	▪	✓
Create tasks	✓	✓	✓	✓
Assign dates	✓	✓	✓	✓
Assign dependences	✓	✓	✓	✓
Store project local	✓	✓	✓	✓
Store project in Project Server	✓	▪	▪	✓
Read in local project into map	✓	✓	✓	✓
Check-out project from Project Server	✓	▪	▪	✓
Check-in project into Project Server	✓	▪	▪	✓
Store project as Map-Template	✓	✓	✓	✓
Administer local resources	✓	✓	✓	▪
Assign local resources	✓	✓	✓	▪
Read in enterprise resourcepool	✓	▪	▪	✓
Assign enterprise resources	✓	▪	▪	✓
Import project from Project Server	✓	▪	▪	✓
Actual project in the map	✓	▪	▪	✓
Show project notes in the map	✓	▪	▪	✓
Recalculate project plan	✓	▪	▪	✓
Show project progress	✓	✓	✓	✓
Actual availability of resources in Project Server	✓	▪	▪	✓
Multiproject overview in the map	✓	✓	✓	✓

## System requirements

### Workstation

- Microsoft Windows XP Professional SP1
- Microsoft Net Framework 1.1
- Microsoft Office Project 2003 Standard or Professional
- Mindjet® MindManager® Pro 6

### Serverside components

- Microsoft Windows Server 2003 SP1
- Microsoft Net Framework 1.1
- Microsoft Office Project Server 2003

### Hardware

- IBM or compatibly Pentium 4 (2.0 GHz) or higher. 512 MB RAM or higher
- 150 MB hard disk space or higher
- SVGA graphic card (800x600) mit 256 colours, rec. 1024x768 or higher

## Wodey Informationssysteme

Microsoft Premier Project Partner

Wittestrasse 8  
53225 Bonn  
GERMANY

Tel.: +49 (0) 228 / 47 60 45  
Fax: +49 (0) 228 / 47 60 46

E-Mail: [projectlinker@wodey.de](mailto:projectlinker@wodey.de)  
Homepage: [www.wodey.de](http://www.wodey.de)  
[www.projectlinker.de](http://www.projectlinker.de)